

THE BACK SCRATCH SCRUBBER

BY THE ÜYA COMPANY™

SAFETY CAUTIONS & INTENDED USE GUIDELINES

PLEASE use your Back Scratch Scrubber responsibly & safely.

Our Safety Cautions & Intended Usage Guidelines MUST be read prior to the Assembly & Installation Instructions.



SAFETY CAUTIONS:

PLEASE KEEP all plastic wrappers & small parts out of the reach of children. These are Choking Hazards. PLEASE BE CERTAIN that your back easily reaches The Back Scratch Scrubber when selecting your mounting wall. Stretching or exerting yourself while pressing your back against The Back Scratch Scrubber could result in slipping, falling or serious injury. PLEASE DO NOT stand on a slippery, soapy, slick or irregular surface while using The Back Scratch Scrubber; a serious slip, fall or injury could occur. PLEASE DO NOT use The Back Scratch Scrubber on an area of red, broken or irritated skin. If any skin irritation occurs after usage, please contact your primary physician or dermatologist for medical evaluation prior to continuing use. PLEASE DO NOT use The Back Scratch Scrubber near an open flame or excessive heat. The Back Scratch Scrubber is NOT fire retardant. Suction Cups may loosen over time, always secure before use.

We have designed The Back Scratch Scrubber Tablet with hard, plastic Bristles to keep your Lüfas firmly in place during use. It is important to NEVER leave The Back Scratch Scrubber unattended while the Lüfas are off of the Tablet, with the hard, plastic bristles exposed; especially around children. Please promptly dispose of any of The Back Scratch Scrubber Tablet Bristles should they break off, as this may pose as a slipping hazard and/or choking hazard for children & animals. Your Back Scratch Scrubber should continue to firmly hold the Lüfas in place, should any of the Tablet Bristles break. The Back Scratch Scrubber was designed with an opening to be used as handle for easy transportation, this opening is NOT to be used in any way shape or form as a "Grab Bar" or any form of stability support.

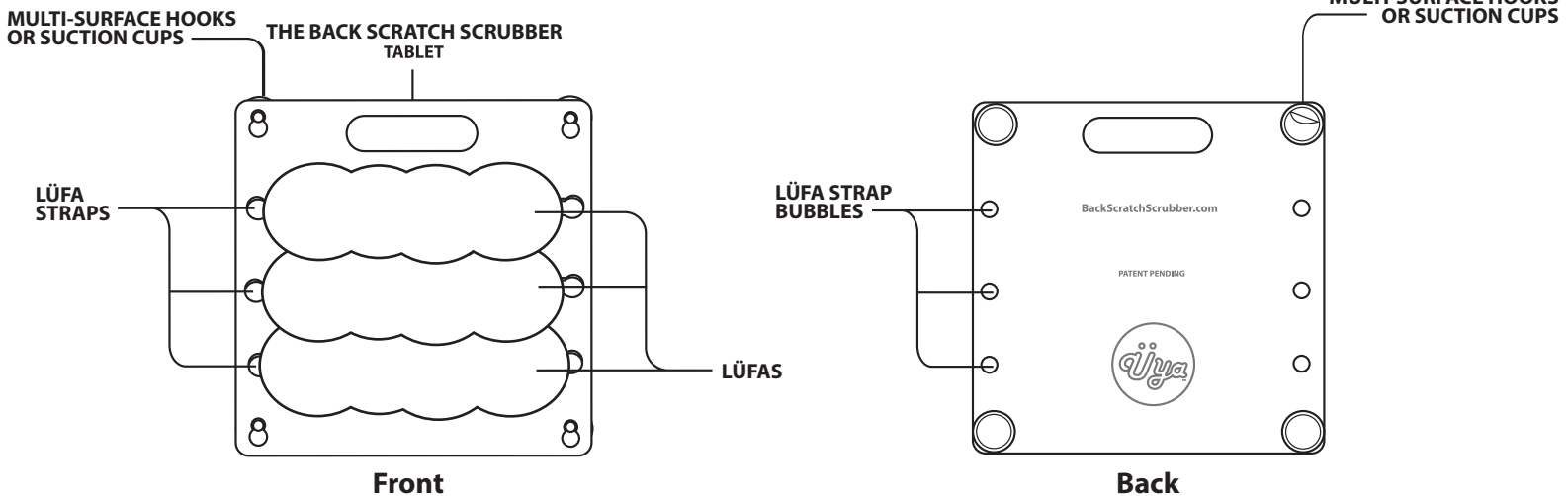
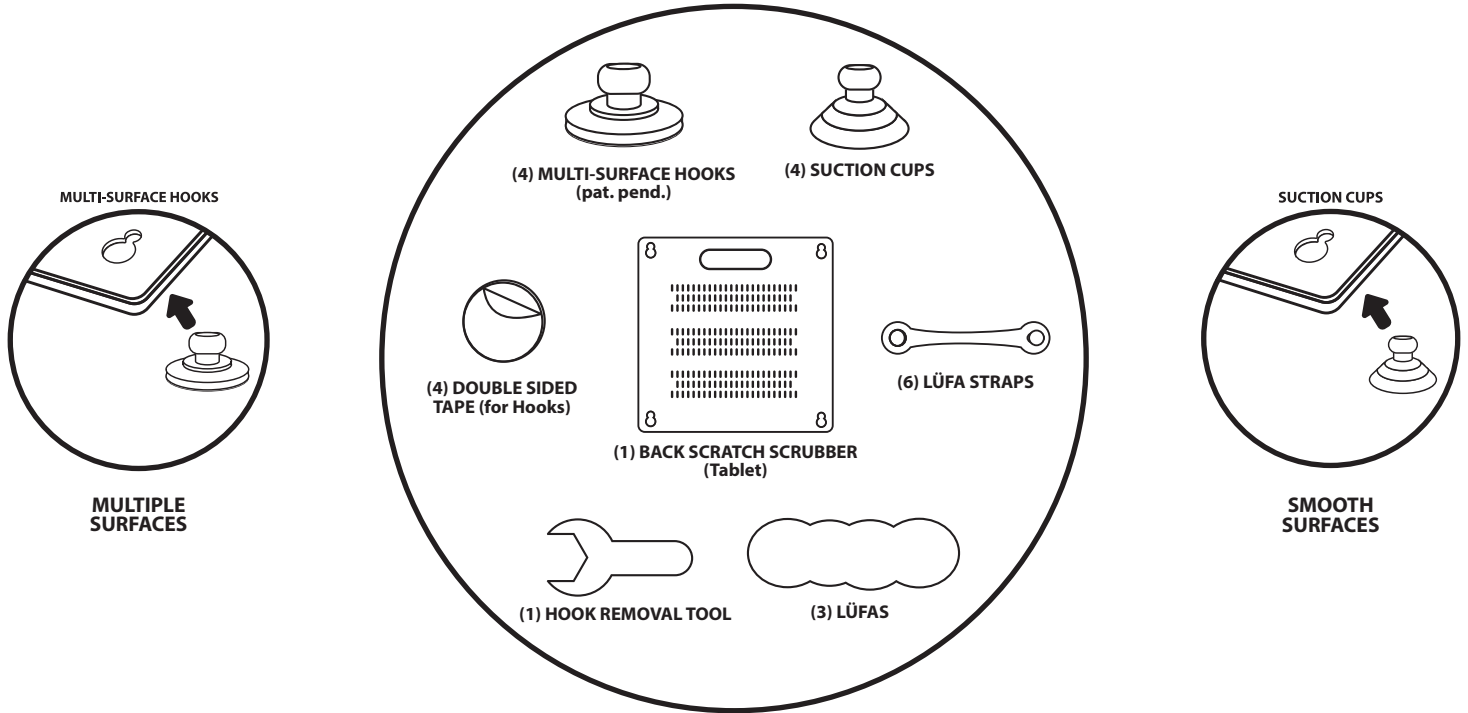
INTENDED USE

We developed our Back Scratch Scrubber to promote a cleaner, smoother, healthier & itch-free back. We recommend dry usage for gently scratching your back. We recommend wet usage for a scrubbing & exfoliating. We recommend both wet or dry usage to provide a degree of exfoliation previously only available during an expensive back facial or with awkward hand held devices.

We recommend a quarter-turn rotation of the Lüfas after 10 usages & a complete replacement of Lüfas after all sides have been used.

FOR AGES 10 & Up

PARTS



PRE-INSTALLATION

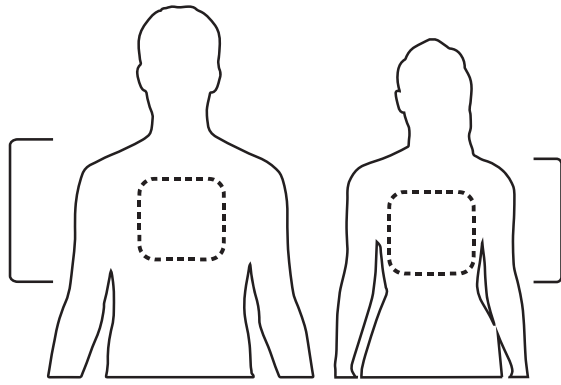
Be certain your back easily reaches The Back Scratch Scrubber when selecting your mounting wall.

Stretching or exerting yourself while pressing your back against The Back Scratch Scrubber could result in slipping, falling or serious injury.

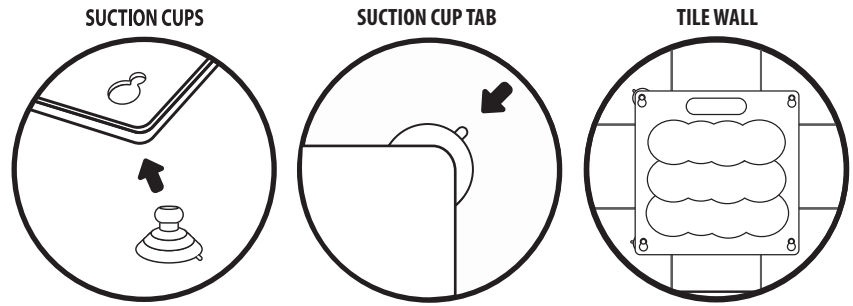
Smooth Surface (Non-Porous): Clean thoroughly with alcohol & paper towel - **Rough Surface (Porous):** Clean thoroughly with a clean dry cloth.

ÜYA, THATS THE SPOT!

SMOOTH SURFACE INSTALLATION



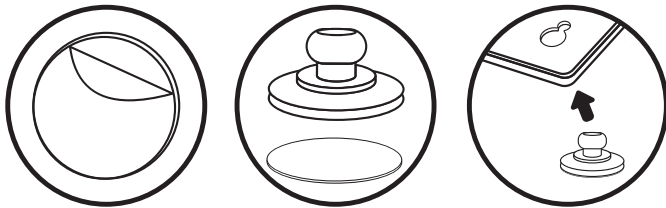
Determine the area of your back that you want covered by The Back Scratch Scrubber. Find the corresponding appropriate height on your mounting wall & lightly mark.



If your tile is smooth & your desired placement position causes the Suction Cups to affix to the tile & not the grout lines; attach the Suction Cups, with the little tabs facing outwards (for easy removal), to the back of the Tablet by pushing Suction Cup head through the Tablet's holes, sliding them into the narrower slot; then firmly press the unit to the wall mounting area that you have previously selected, measured & cleaned.

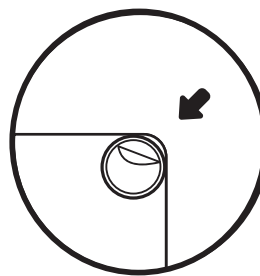
ROUGH SURFACE INSTALLATION

DOUBLE-SIDED TAPE

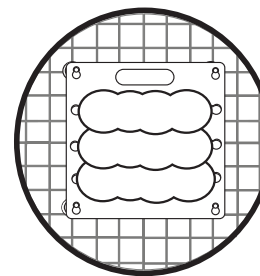


For these surfaces we have provided (4) Multi-Surface Hooks & (4) Double-Sided Tape Disks. Peel & affix one side of each Double-Sided Tape to the flat base of each Multi-Surface Hook. Do NOT peel second side of Double-Sided Tape until just prior to mounting on wall. Attach Multi-Surface Hook to the back of the Back Scratch Scrubber Tablet by pushing the Multi-Surface Hook Head through the Tablet holes, sliding them into the narrower slot.

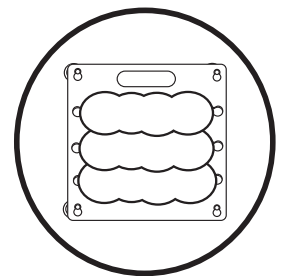
DOUBLE-SIDED TAPE



TILE (GROUT)



INTERIOR/EXTERIOR WALL



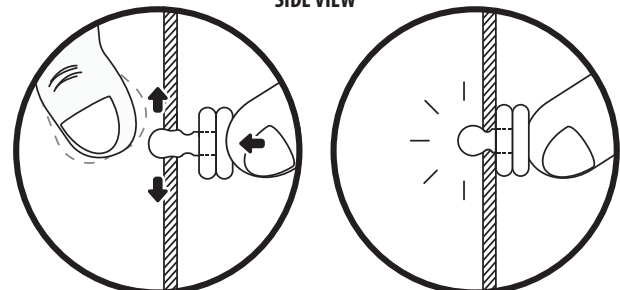
Now peel second side of the Double-Sided Tape & then firmly press unit to the wall mounting area that you have previously selected, measured & cleaned.

ROTATING / REPLACING LÜFAS

We recommend a quarter turn rotation of the Lüfas after 10 usages & a complete replacement of Lüfas after all sides have been used.

RE-APPLYING THE LÜFA STRAPS

SIDE VIEW

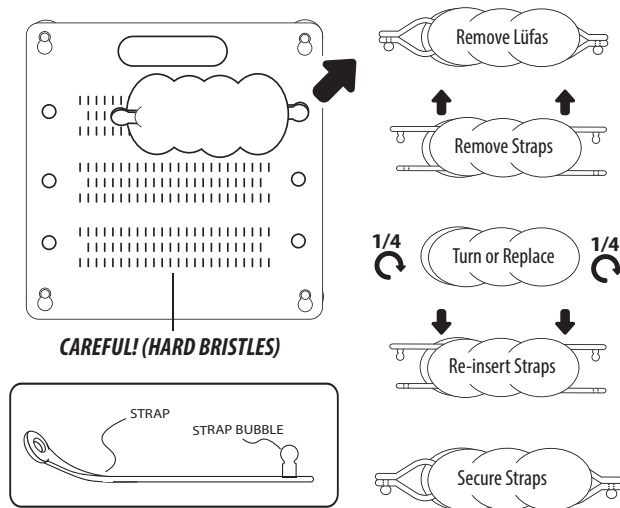


WIGGLE & PUSH

UNTIL IT POPS THROUGH

Wiggle the Strap Bubble as you push the other side of the Strap, until the Strap Bubble has popped through to the other side completely.

Repeat these steps when replacing your Lüfas. (Available on our Website) Be sure to re-distribute the Lüfa, once placed, to release any tension, & to keep it from pulling & stressing the Straps.



REMOVAL OF THE BACK SCRATCH SCRUBBER

Suction Cups are easily removed by tugging on the little Suction Cup tabs.

Multi-Surface Hooks are easily removed by placing the included Hook Removal Tool around the base of one Multi-Surface Hook at a time & slowly rotating the Hook until each Hook & Tape is freed from the mounting wall. DO NOT PULL on the Hook at any point until it has fully disconnected.



GOTO
WWW.THEUYACOMPANY.COM/INSTRUCTIONS
 OR SCAN THIS QR CODE TO WATCH VIDEO INSTRUCTIONS!

